



# AV40PG\_Digital Pressure Gauge

## APPLICATIONS

- \* Automation equipment
- \* Variable frequency water supply
- \* Laboratory equipment
- \* pneumatic and hydraulic system

## FEATURES

- \* 4 digital showing the pressure in real time
- \* Two types signal available: 4-20mA remote signal or Rs485 signal
- \* Good stability, anti electromagnetic interference design
- \* Varied pressure units available, erro clearing and zero clearing
- \* Wide operation temperature range, wide application areas

## OVERVIEW

This digital remote-transmission pressure gauge has two types outlet signal: 4-20mA remote signal, or RS485 signal based on the standard MODBUS RTU communication protocol.

This series of remote gauge uses four digit display, showing real-time pressure. while, the pressure signal can be remoted, transmission distance more than five hundred meters.

This series of digital remote transmission pressure gauge with built-in pressure sensor, has function for users to change the pressure units, zero & error clearing, correction filter constant etc.. It has followed features: 304 stainless steel shell and connector, waterproof cable outlet, waterproof grade IP65, with a very wide range of medium applicability.

## SPECIFICATION:

Range	Gauge Pressure Range: 0-2Bar...10...16...50...100...250...400...600Bar Absolute Pressure Range: 0-5kPa...10...20...100...1000kPa
Overload Pressure	≤100Bar 200%; >100Bar 150%;
Display	LCD (4-20mA) LED(RS485)
Response Time	2ms
Accuracy	0.25%FS
Stability	Typical: ±0.5%FS/year
Zero Temperature Drift	Typical: ±0.02%FS/°C, Max ±0.05%FS/°C
Sensitivity Tem Drift	Typical: ±0.02%FS/°C, Max ±0.05%FS/°C
Operating Temperature	-20 ~ 80°C
Compensation Temperature	-10 ~ 70°C
Storage Temperature	-40 ~ 100°C
Power Supply	12-32VDC (Typical 24V)
Output Signal	4-20mA or RS485
Electric Protection	Reverse voltage protection, anti-electromagintic interference
Protection Level	IP 65
Measurement Medium	Gas, liquid
Pressure Connector	M20*1.5 (other are customized)
Shell	304 Stainless Steel



## Ordering Method

For Example:-

AV40PG

P

600

A

1

L

4

S

1

2

3

4

5

6

7

8

1

Series	Code	Description
	AV40PG	

6

Wetted Material	L	316L-SS
-----------------	---	---------

2

Pressure Unit	B	Bar
	P	PSI

7

Output	4	4-20mA
	M	RS-485
	X	No Signal output

3

Pressure Range	000	Standard Pressure Range (3-Code)
Example	0d2	0.2
	010	145
	100	1450
	600	8700
	d	Decimal Place

8

Electrical Connection	S	3m Cable
	Y	M12x1-4P

4

Pressure Type	A	Absolute
	G	Gauge

5

Header Thread	1	1/2MNPT
	4	4-20mA
	5	M20x1.5Male
	Y	G1/2Male
	Z	G1/4Male

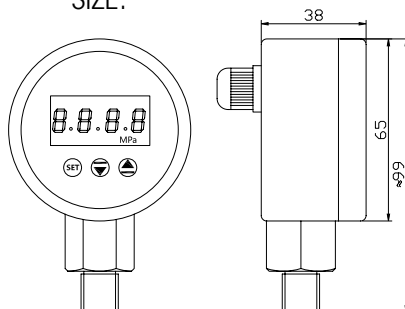
Pressure Range			
Pressure Range	PSI	Bar	kPa
	0-29	002	200
	0-145	010	01K
	0-232	016	1K6
	0-725	050	05K
	0-1450	100	10K
	0-3600	250	25K
	0-5800	400	40K
	0-8700	600	60K

## DIMENSIONAL DATA

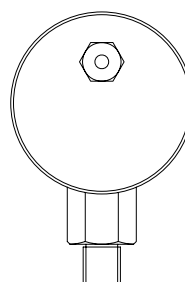
### ELECTRICAL CONNECTION:

4-20mA(Two Wire)		RS485 Signal(Four Wire)	
Power Supply(V+)	Red	Power Positive(V+)	Red
		Power Negative(V-)	Black
Signal(V-)	Black	RS485(S+)	Green
		RS485(S-)	White

SIZE:



UNIT: mm



ATTENTION: 4-20mA using LCD  
RS485 using LED